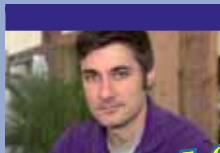


3rd Season Begins October 2007!



# Your House & Home

*weekly half hour with  
Teresa Garrett*



*Jeff*



*Stephanie*



*Grant*



*Elizabeth*



*Exclusive TV Show for NextGen Home Experience.*

# Your House & Home

Airing on 220 Analog-Digital- Cable Stations

Seen in 190 Cities Covering 70% of USA Televisions including:

New York-WCBS/CBS

Washington-WJLA/ABC

Kansas City-KSHB/NBC

Philadelphia-WPSG/CW

Phoenix-KTVK/IND

Cincinnati WKRC/CW

San Francisco-KTVU/FOX

Seattle-KONG/IND

Oklahoma City-KFOR/NBC

Dallas-KTXA/IND

Minneapolis-WCCO/CBS

Providence-WLNE/ABC

Boston-WBZ/CBS

Baltimore-WNUV/CW

Austin-KEYE/CBS



**Our 3rd Season & 12 Year Track Record**

**The most experienced team in Home Improvement TV**

Host Teresa Garrett and the YH&H production staff helped create and produce one of the pioneers of Home Improvement Programming, Your New House. The program aired nationally for 10 seasons in syndication, 2 years on HGTV and 5 years on Discovery Networks. YOUR HOUSE & HOME builds on that solid foundation of experience with a fresh and exciting approach that appeals to the targeted audience and advertisers.

### ***Teresa Garrett - Host***

Teresa is the original “Do-it-Yourself” female co-host of a national Home Improvement TV Show. For 5 years she helped guide viewers through home projects on Your New House, the program that helped pioneer Home Improvement on Broadcast Television.

### ***Jeff Schmidt - Co-host***

Jeff is an experienced Carpenter and a true Handyman with years of experience remodeling homes and building sets for Movies, Television, and Theatre. With His “Hands-On” knowledge and “How To” instructions show the right way to improve and remodel.

### ***Stephanie Young - Co-host***

Stephanie represents the less experienced homeowner and residential consumer who loves Home Improvement and is interested in learning about proper techniques and the latest in home products.

### ***Grant Goodeve - Contributor***

Grant’s been on TV for 30 years, starring in shows like Eight is Enough, Dynasty, and Northern Exposure as well as hosting If These Walls Could Talk and Homes of our Heritage on HGTV. Grant presents the latest in technology, energy efficiency, and new home building innovations in the NextGen Home Experience.

### ***Elizabeth Anna Samudio - Contributor***

Elizabeth Anna has built an organic landscaping business, literally, from the ground up. Elizabeth Anna’s Old World Garden, an earth-friendly business, has been featured on national TV and many mainstream publications. She has written and photographed on the topic for numerous publications and is a sought after speaker.



# <http://www.yourhouseandhome.tv/>

- Targets a dedicated audience of residential consumers and trade professionals.
- Attracts viewers motivated to learn about remodeling, new products, do-it-yourself and other lifestyle features.



- Appeals to a receptive demographic that is the free-spending heart of the Home Improvement industry.
- A wide-open opportunity to capture new revenue from a largely untapped local category of sponsors.

# Targeted, Effective & Affordable

THE CONSTANT CATEGORY  
LOCAL MEDIA PACKAGE

SEASON 3 - WEEKLY HALF HOUR TELEVISION SHOW  
26 Originals. Fresh, Targeted & Effective

STREAMING VIDEO TO STATION WEBSITE  
Locally Sponsored IPTV

2 MINUTE FEATURES ON PROJECTS & PRODUCTS  
For Morning Shows & Weekend News

DOWNLOADABLE PROMOTION & SALES MATERIALS  
Localize with Logo, Day & Time

TALENT AVAILBALE FOR LOCAL APPEARANCES  
Station Sponsors - Home & Garden Shows

TOPICS:

Start To Finish

Out In The Open

Safe At Home

Ask The Experts

Kid Friendly

Elizabeth's Garden

Just Arrived

Get This Gadget

Pet Projects

Definitely Design

City Dwellers

Closer To Home

Major Trade Shows:

Consumer Electronics Show

International Builders Show

Kitchen and Bath Show



*Exclusive TV Show for NextGen Home Experience with Grant Goodeve.*

*“It’s better than Advertising. It’s Multi-Platform Delivery of Product Messages and Brand Impressions aimed at the Heart and Economy of the Home Improvement Audience.”*

Advertisers, sponsors and featured products:

Acme Brick  
American Tile  
Aprilaire  
Briggs & Stratton  
Carrier  
Coleman  
Dallas HBA  
Delta Faucets  
DuPont Corian  
Electrolux  
Frigidaire

Gerrard Roofing  
Gutter Helmet  
Kitchenaid  
Kohler  
Mannington Floors  
Master Spa  
Microsoft  
Panasonic  
Patio Enclosures  
Pella  
Propane

Purina  
RCA  
ShadeTree Canopy  
Sherwin Williams  
Simonton  
Trane  
Tuff Shed  
Whirlpool  
Wild Birds Unlimited



---

# Your House & Home

For more information **817.561.0721**  
please contact: [media@tvmarketingpartners.com](mailto:media@tvmarketingpartners.com)